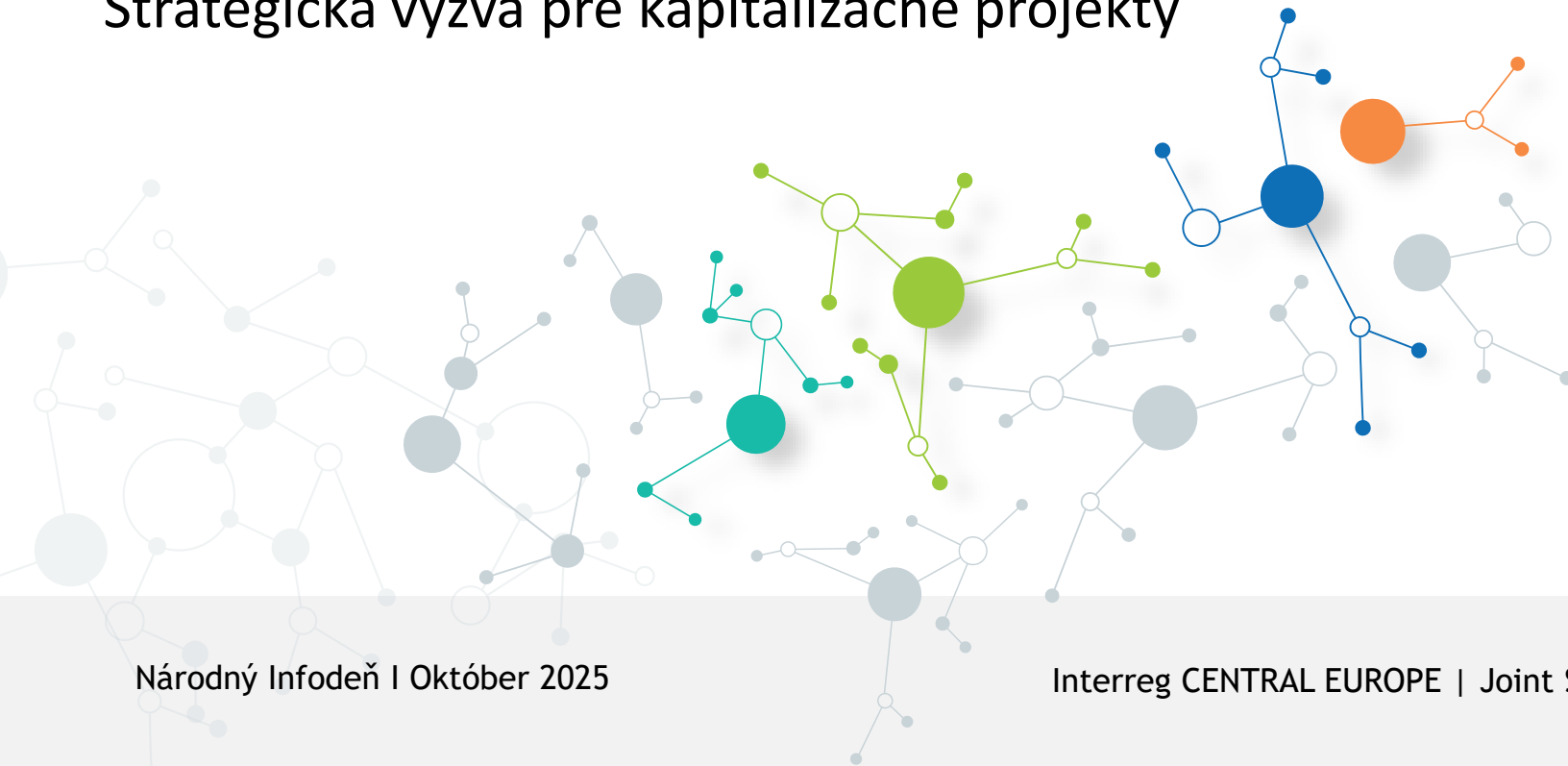
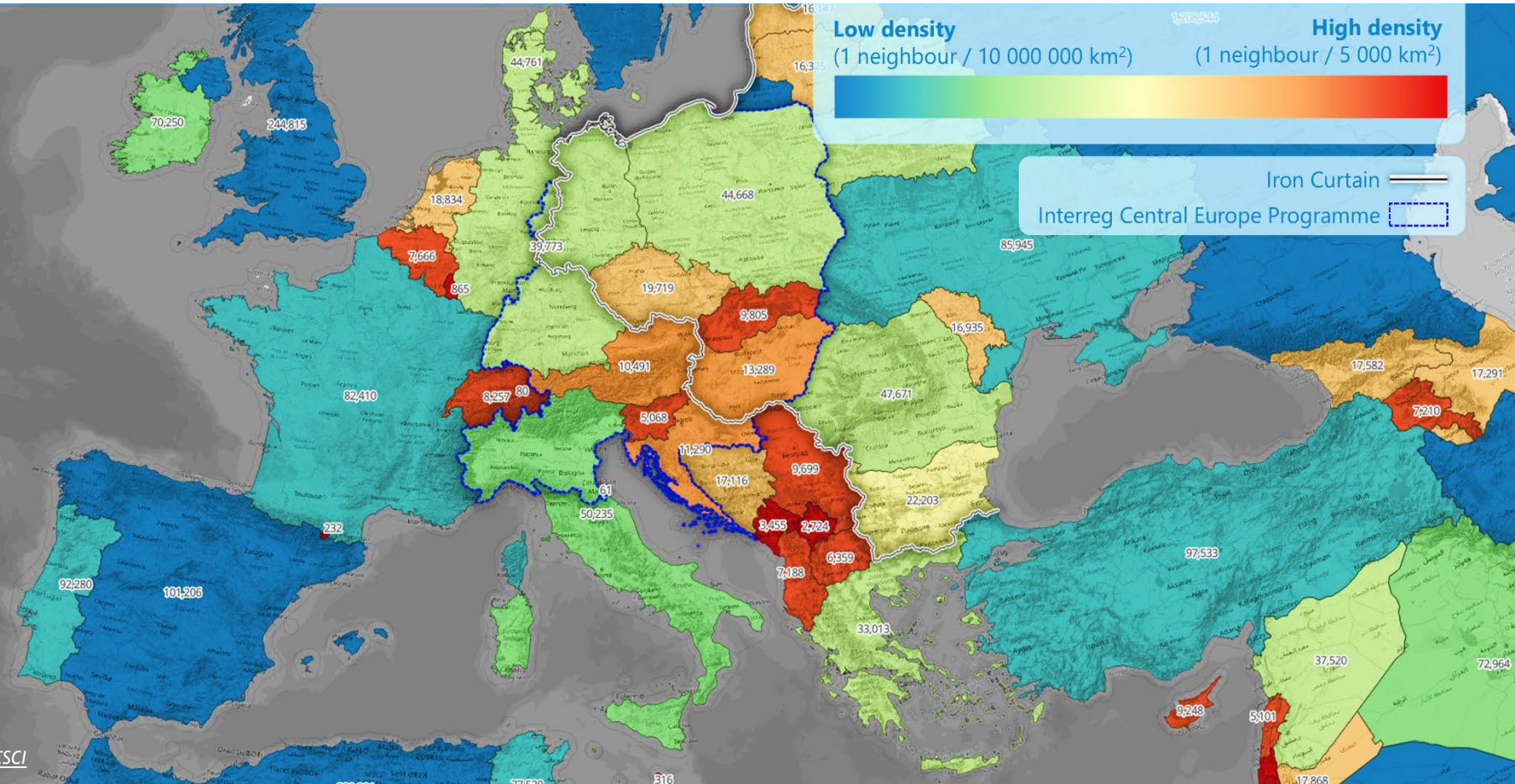


Strategická výzva pre kapitalizačné projekty



Framework and Objective of the Strategic Call for Capitalisation

European Border Density



Negative Effects of Borders



Lower Growth

It is estimated that, at the European level, the costs of border obstacles add up to 458 billion euros, which accounts for **3% of European GDP**.



Lower Employment

It also means losing more than 6 million jobs, which is **3% of European employment**.

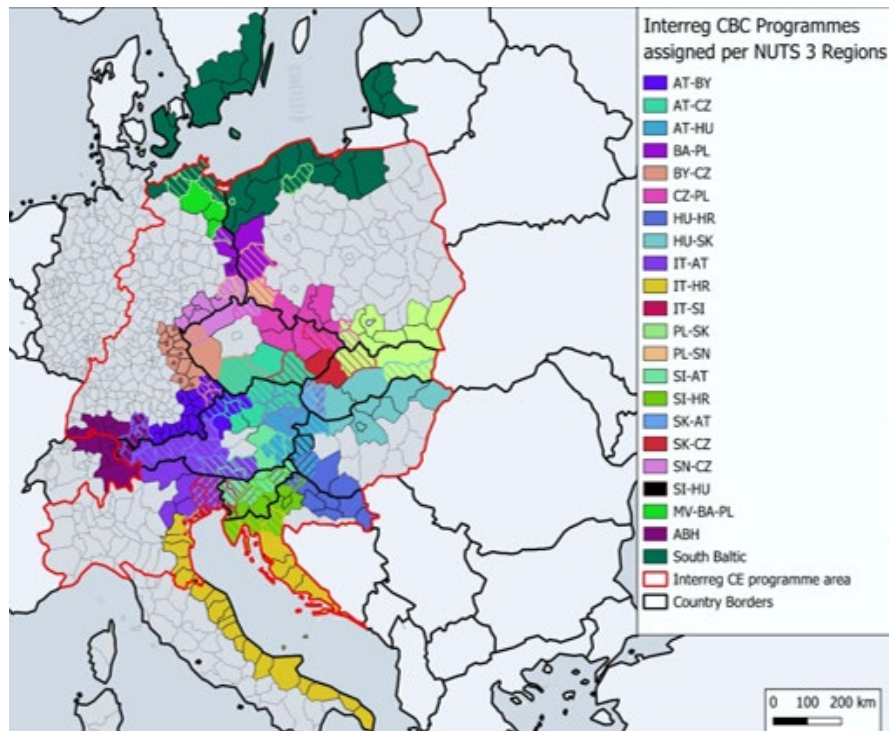


Lower Efficiency

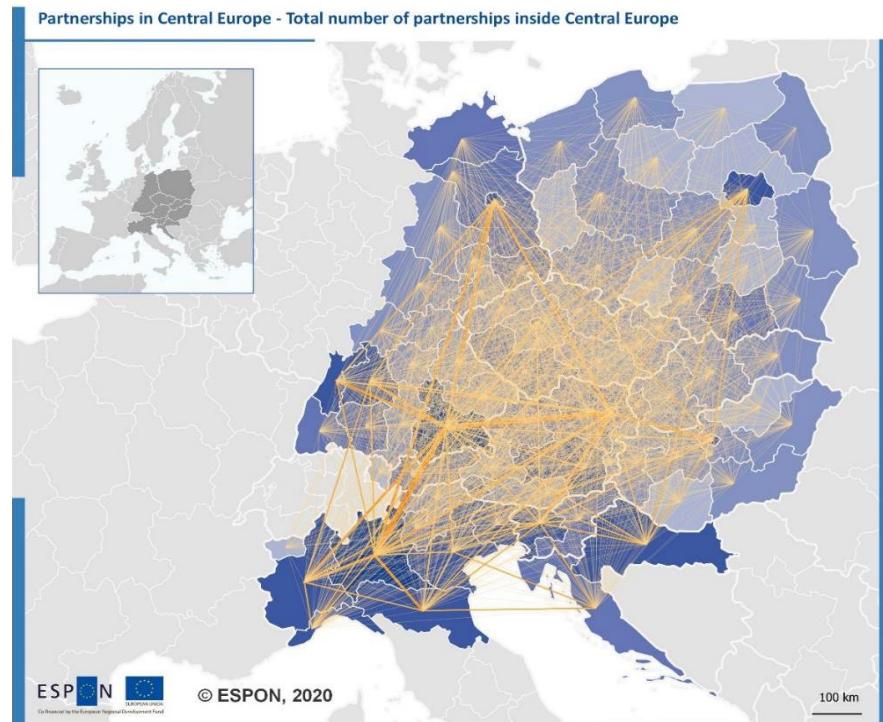
Solutions for shared challenges often remain at the local level, and do not unfold their full potential for the central Europe area.

How Interreg Addresses Border Effects

Cross-border cooperation in CE



Interreg CE transnational cooperation



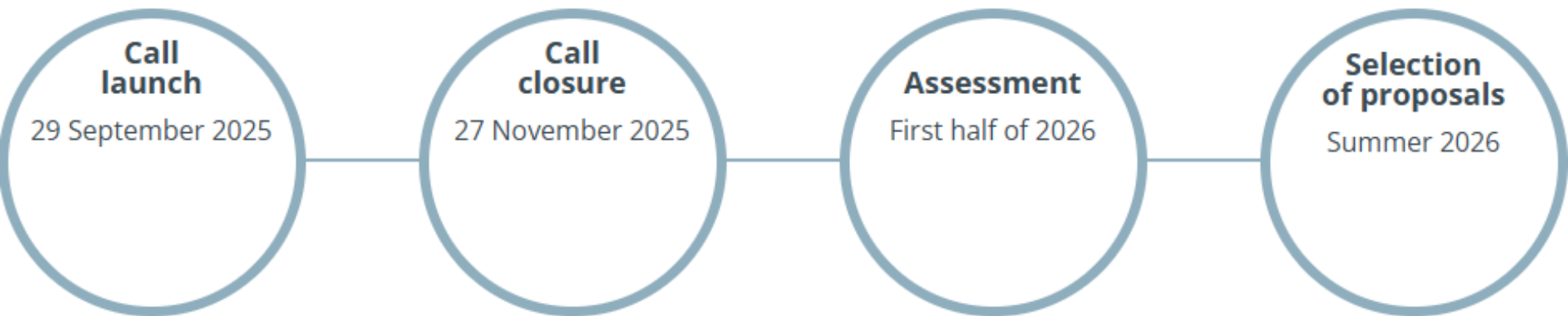
Objective of the Strategic Call for Capitalisation

To reduce the effects of borders on flows and functional linkages among central European regions, for a more competitive and resilient central Europe

By **taking up** and **further developing** existing Interreg results to meet **new needs** and strengthen their **policy impact**

Strategic projects for capitalisation are expected to **leverage synergies, breaking the silos** between Interreg strands

Call Timeline



Thematic Scope

Main Features of the Call



Priority 1: Cooperating for a smarter central Europe
(SO 1.1 & SO 1.2)



Priority 3: Cooperating for a better connected central Europe
(SO 3.1)

All our funding priorities and specific objectives are open in this call



Priority 2: Cooperating for a greener central Europe
(SO2.1, SO2.2, SO2.3, SO 2.4, SO 2.5)



Priority 4: Improving governance for cooperation in central Europe
(SO 4.1)



Priority 1: Cooperating for a smarter central Europe

SO 1.1

- Innovation management in SMEs
- Health care (innovation) and silver economy

SO 1.2

- Entrepreneurship
- Matching skills to labour market needs of regions in industrial and digital transition



Priority 3: Cooperating for a better connected central Europe

SO 3.1

- Accessibility of peripheral areas including digital transport solutions, transport strategies and planning

Ideas are welcome in all relevant topics of each specific objective.
Among others, the following topics show a good potential for capitalisation:



Priority 2: Cooperating for a greener central Europe

SO 2.2

- Risk awareness, prevention and management such as for forest fires, floods, landslides and erosion
- Climate change adaptation

SO 2.4

- Biodiversity conservation and recovery
- Protection of ecosystems and sustainable management



Priority 4: Improving governance for cooperation in central Europe

SO 4.1

- Integrated territorial development including establishment of formal cooperation structures, access to public services of general interest and tourism

- Priority
- Country
- Call



interreg-central.eu/project-gateway



3P4SSE



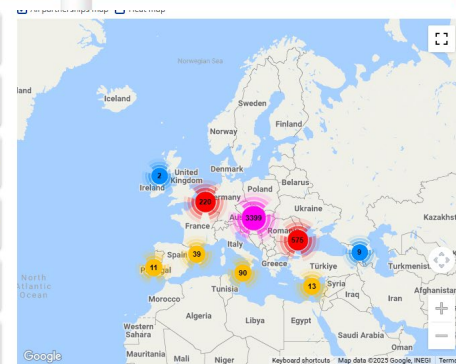
ACCESSMILE



AGRI-DIGITAL GROWTH

keep.eu/projects

- Health and longevity 2021 - 2027 Interreg VI-A IPA Romania Serbia**
Health and social services, Social inclusion and equal opportunities, Community integration an...
- Greener future 2021 - 2027 Interreg VI-A IPA Romania Serbia**
Health and social services, Education and training, Rural and peripheral development.
- BanathHoneyRoute 2021 - 2027 Interreg VI-A IPA Romania Serbia**
Health and social services, Tourism, Agriculture and fisheries and forestry
- Friendship 2021 - 2027 Interreg VI-A IPA Romania Serbia**
Education and training, Social inclusion and equal opportunities, Community integration and C...
- Cycling ROSE 2021 - 2027 Interreg VI-A IPA Romania Serbia**
Tourism, Improving transport connections, Community integration and common identity
- CROSS-HEALTH 2021 - 2027 Interreg VI-A IPA Romania Serbia**
Health and social services, Demographic change and immigration, Labour market and employ...



Call budget per programme SO (indicative)

Programme priorities and specific objectives (SO)	Indicative ERDF budget (million EUR)
Priority 1: Cooperating for a smarter central Europe	
SO 1.1 Innovation capacities	3,6
SO 1.2 Smart skills	1,8
Priority 2: Cooperating for a greener central Europe	
SO 2.1 Clean energy transition	2,7
SO 2.2 Climate change resilience	3,4
SO 2.3 Circular economy	2,7
SO 2.4 Environment	3,4
SO 2.5 Green urban mobility	1,8
Priority 3: Cooperating for a better connected central Europe	
SO 3.1 Improving rural and peripheral transport	1,8
Priority 4: Improving governance for cooperation in central Europe	
SO 4.1 Governance for integrated territorial development	1,8
Total	23

Specificities of Strategic Call for Capitalisation

Minimum Requirement for Synergies

Project proposals must take up existing outputs and results from:



At least two Interreg CENTRAL EUROPE projects 2021-2027 (first and second call)



At least two Interreg cross-border cooperation projects 2021-2027 (or, if relevant, 2014-2020), addressing [internal central European borders](#)

Key Project Features



Objective

Clear emphasis on capitalisation of transnational and cross-border outputs and results



Transnationality

At least three partners from three countries, two of which are located in central Europe



Duration

Between 18 and 24 months



Budget

Up to 1 million EUR of ERDF

INPUT: EXISTING OUTPUTS AND RESULTS

Transnational project outputs
and results

Cross-border project outputs
and results

Outputs and results of other
project(s)

CAPITALISATION PROJECT

Addressing specific needs and
challenges of new
stakeholders and territories

Outputs and results fitting
the new needs

IMPACT/RESULTS

UP-STREAM
to policy levels

New
stake-
holders

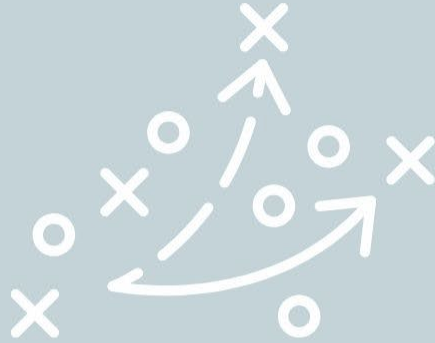
**DOWN-
STREAM**

New
regions

New
sectors

Up-streaming of outputs and results

MAIN FOCUS ON
THE
IMPLEMENTATION
OF STRATEGIES
AND ACTION
PLANS



Project outputs are integrated into policies



Down-streaming of outputs and results

MAIN FOCUS ON
THE
IMPLEMENTATION
OF THE PILOT
ACTIONS AND
SOLUTIONS



Project outputs are rolled-out to new regions or sectors

How to Build your Partnership and Project Proposal

Partnership



Partnership size and transnationality

- Minimum requirement

3

Partners

3

Countries

2

At least from
Central Europe

- No recommended size (consider project scope and budget limitations)

Partnership composition - recommendations

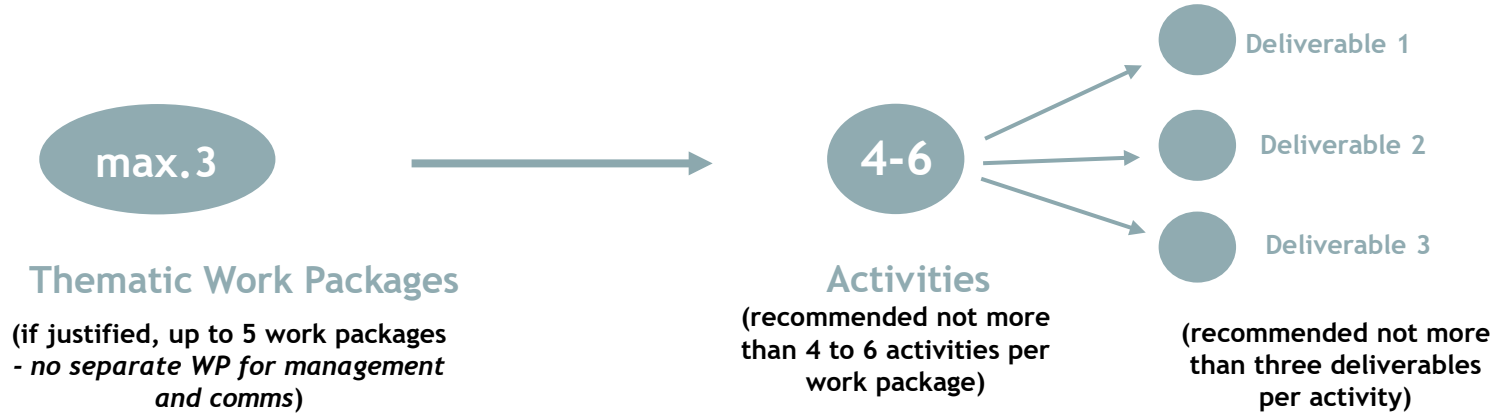


- All types of institutions can participate
- Coherence with the territorial and thematic scope of the project (e.g. competencies, governance level, sectors, outreach to target groups etc.)
- Composed of
 - organisations that were actively participating in the Interreg CENTRAL EUROPE projects to be capitalised; and
 - organisations that were actively participating in the Interreg cross-border cooperation projects to be capitalised
- Owning the outputs and results being capitalised, or holding the relevant user rights
- Involving additional organisations that can facilitate the upstreaming or down-streaming of existing outputs and results (e.g. public actors in charge of policies, organisations representing the new territories or sectors addressed)

Intervention logic





- **Project objectives**
 - To be clearly aligned to the call objective of reducing border effects
 - To reflect the capitalization focus of the call
- **Project outputs**
 - Full set of output types (strategies, action plans, pilot actions, solutions, cooperations)
- **Capitalisation approach**
 - Upstreaming of outputs and results - main focus on the implementation of strategies and action plans
 - Downstreaming - main focus on pilot actions and solutions
- **Project results**
 - Concrete uptake of existing outputs and results
 - Generating impact and effects for the benefit of wider areas, beyond border regions

Project work plan








For guidance and details on the project intervention logic and work plan, please refer to the programme manual, the offline template of the application form and the online tutorials.

Key features of a good capitalisation project (1)

-  **Clear and Relevant Logic:** A good project has a clear and relevant intervention logic, contributing to the call objective.
-  **Transnational Added Value:** The project must show clear added value from transnational cooperation.
-  **Clear capitalisation approach:** It has to clearly build on outputs and results of previous projects and demonstrate a concrete capitalisation approach.
-  **Sound Work Plan:** A good project has a well-focused and mature work plan.

Key features of a good capitalisation project (2)

-  **Competent Partnership:** Partnerships should include partners which were actively involved in the projects to be capitalised and further institutions relevant for their **downstreaming** and/or **upstreaming**
-  **Strong Management:** Effective project management ensures quality outputs and results.
-  **Effective Communication:** A strong communication manager coordinates communication activities.
-  **Value for Money:** Projects must demonstrate value for money with an efficient budget.
-  **Long-lasting Impact:** Projects should ensure long-lasting benefits and broad uptake and roll-out of results in additional sectors and/or regions.

Project budget



Maximum total project budget EUR 1.250.000

(=max. EUR 1.000.000 ERDF)

- Real Costs
- Simplified cost option (SCO)
- Obligatory SCO

Each LP/PP has to choose ONE of the following budget options:

	OPTION 1	OPTION 2	OPTION 3
Preparation	Lump sum for preparation and contracting costs		
Project Implementation	CC1 Staff Costs Real costs	CC1 Staff Costs Flat rate 20% of CC4, CC5 & CC6	CC1 Staff Costs Real costs
	CC2 Office & Admin Costs Flat rate 15% of CC1	CC2 Office & Admin Costs Flat rate 15% of CC1	All other CCs Flat rate 40% of CC1
	CC3 Travel & Acc. Costs Flat rate % of CC1 (% is country specific)	CC3 Travel & Acc. Costs Flat rate % of CC1 (% is country specific)	
	CC4 Ext. Exp. & Services Real costs	CC4 Ext. Exp. & Services Real costs	
	CC5 Equipment Costs Real costs	CC5 Equipment Costs Real costs	
	CC6 Infrastructure & Works Real costs	CC6 Infrastructure & Works Real costs	
Closure	Same as option chosen for project implementation		

Support Measures and Tools

Applicant support measures



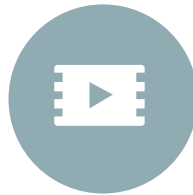
Community

Online applicant community to facilitate project partner search and present project ideas



Webinars

Digital events to introduce the call and opportunity for applicants to ask questions. Join our [Q&A Webinar on 16 October](#)



Videos

Set of tutorials and explainers introducing the key aspects of the call, thematic fields and project development



National support

Guidance and information by national contact points (NCPs) in national languages and application issues



Individual consultations

Individual consultations with the JS to provide guidance on project development and application requirements

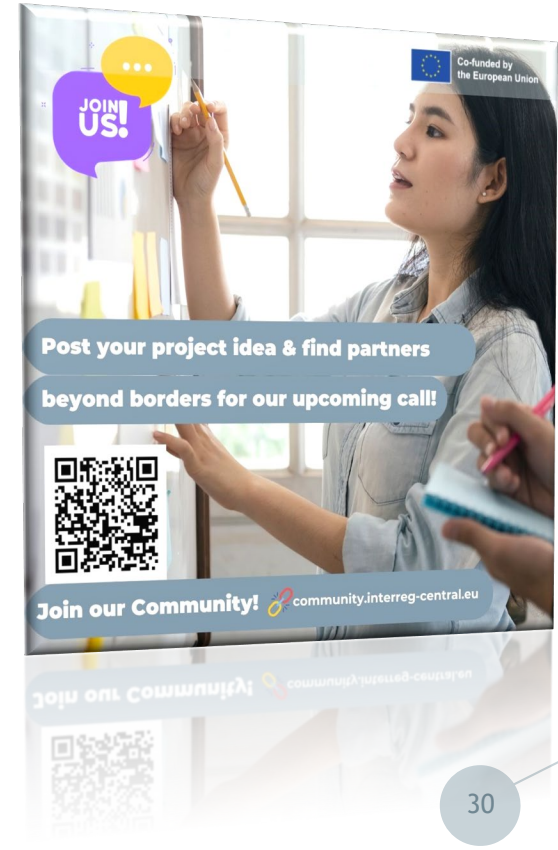


The applicant community is available at <https://community.interreg-central.eu/>

The permanent helpdesk is available at helpdesk@interreg-central.eu

Individual consultations

- **Early consultation:** It is advised to request the consultation early in the project development phase, but with a sufficiently mature project idea.
- **Consultation input:** Consultations are based on the project idea form, which must be submitted through our applicant community platform (it is not obligatory to publish it).
- **Consultation requesting period:** Request your consultation between 30 September and 19 November 2025.



Call-related documents

All relevant documents are available for download at www.interreg-central.eu/documents



Application Package

- a. Terms of Reference (ToR)
- b. Offline application form template with guidance;
- c. Lead partner & project partner declaration templates;
- d. Simplified financial statement (*applicable only to private lead applicants*);



Tools

- a. Self-assessment tool of your project proposal
- b. Project summary generator
- c. Financial capacity check for private lead applicant
- d. Mapping of B-solutions



Manuals

- a. Programme manual*
- b. Jems manual*

**available as PDF and in HTML*

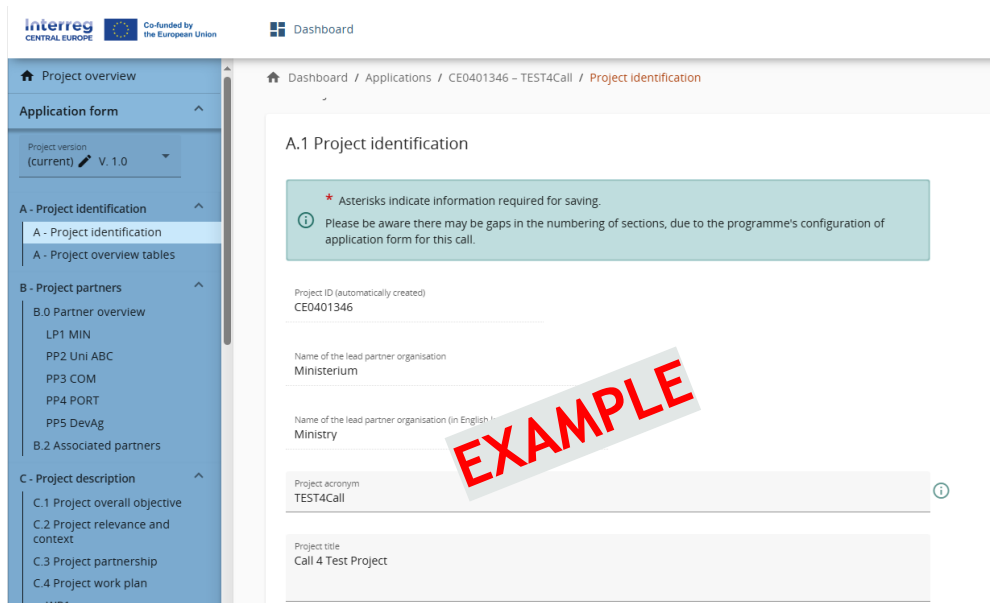
Jems

Applications have to be submitted through the web-based Joint electronic monitoring system (Jems) available at

<https://jems.interreg-central.eu>

Attention:

Regularly run the pre-submission checks of your application when preparing your project proposal and don't wait the last minute!



The screenshot shows the 'Project identification' section of the Jems application form. The left sidebar contains a navigation menu with sections A, B, and C. The main content area shows the form fields for 'Project ID', 'Name of the lead partner organisation', 'Project acronym', and 'Project title'. A red 'EXAMPLE' watermark is overlaid on the form. A green information box at the top of the form states: 'Asterisks indicate information required for saving. Please be aware there may be gaps in the numbering of sections, due to the programme's configuration of application form for this call.' Below the form, a legend defines three types of verification messages: Error (red exclamation mark), Warning (yellow triangle), and Info (green checkmark).

interreg CENTRAL EUROPE Co-funded by the European Union Dashboard

Project overview

Application form

Project version (current) V. 1.0

A - Project identification

A - Project identification

A - Project overview tables

B - Project partners

B.0 Partner overview

LP1 MIN

PP2 Uni ABC

PP3 COM

PP4 PORT

PP5 DevAg

B.2 Associated partners

C - Project description

C.1 Project overall objective

C.2 Project relevance and context

C.3 Project partnership

C.4 Project work plan

WP1

Dashboard / Applications / CE0401346 - TEST4Call / Project identification

A.1 Project identification

* Asterisks indicate information required for saving.

Please be aware there may be gaps in the numbering of sections, due to the programme's configuration of application form for this call.

Project ID (automatically created) CE0401346

Name of the lead partner organisation Ministerium

Name of the lead partner organisation (in English) Ministry

Project acronym TEST4Call

Project title Call 4 Test Project

EXAMPLE

Error - verification failed.
Required user interaction.

Warning - there is recommendation how to enhance data quality of Application Form
User interaction is desirable.

Info - verification passed successfully.